

TA32

series



Product Segments

- **Comfort Motion**

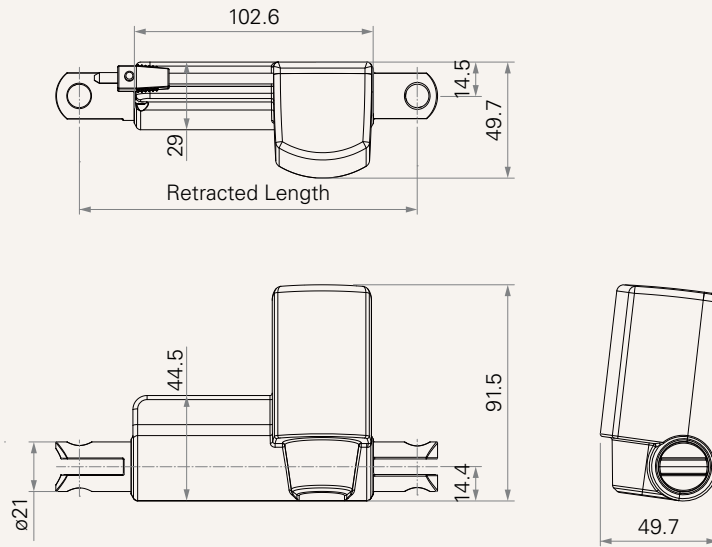
TA32 is a head tilt motor for recliner applications. It can help with adjusting the top head position which will make the end users with more pleasant using experience.

General Features

Voltage of motor	24V DC, 24V DC (PTC)
Maximum load in push	500N
Maximum speed at full load	8.8mm/s (with 300N in a push condition)
Stroke	050 / 044 / 040 / 034 / 031 / 025 / 015mm
Minimum installation dimension	143mm
Color	Black or grey
Certificate	UL962

Drawing

Standard Dimensions
(mm)



Load and Speed

CODE	Load (N)		Typical Current (A)		Typical Speed (mm/s)	
	Push	Pull	No Load 32V DC	With Load 24V DC	No Load 32V DC	With Load 24V DC
Motor Speed (5000RPM, duty cycle 10%)						
A	500	300	0.1	0.8	11.0	4.8
B	300	300	0.1	0.6	16.0	8.8

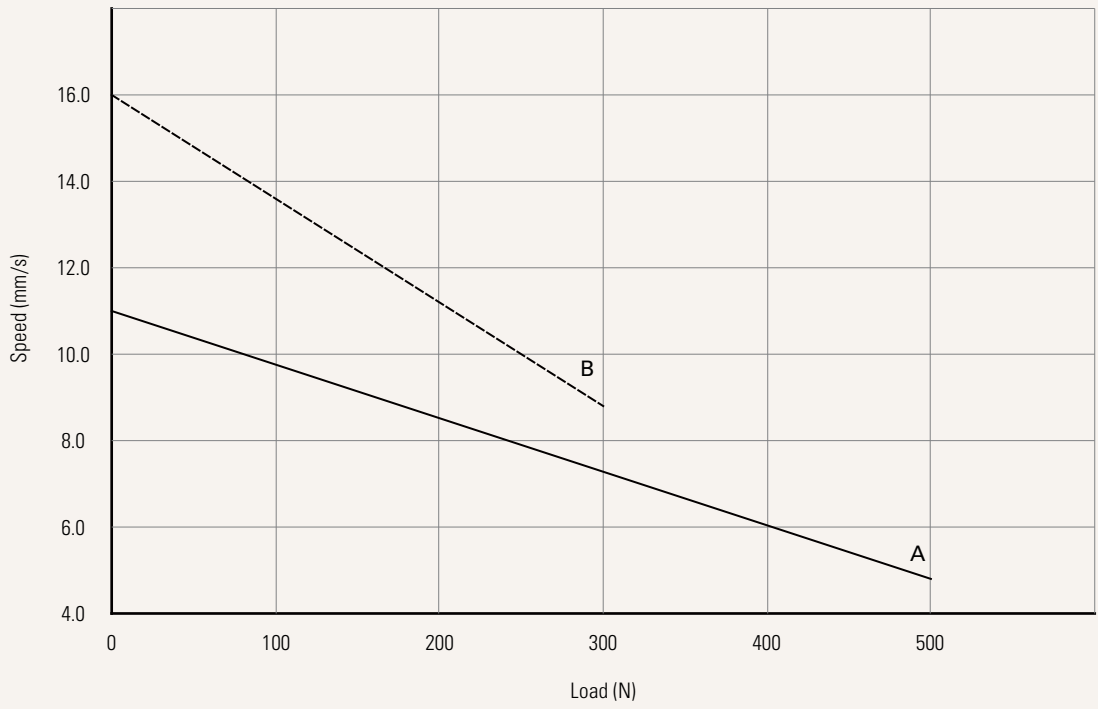
Note

- 1 This self-locking force level is reached only when a short circuit is applied on the terminals of the motor. All the TiMOTION control boxes have this feature built-in.
- 2 The current & speed in table are tested when the actuator is extending under push load.

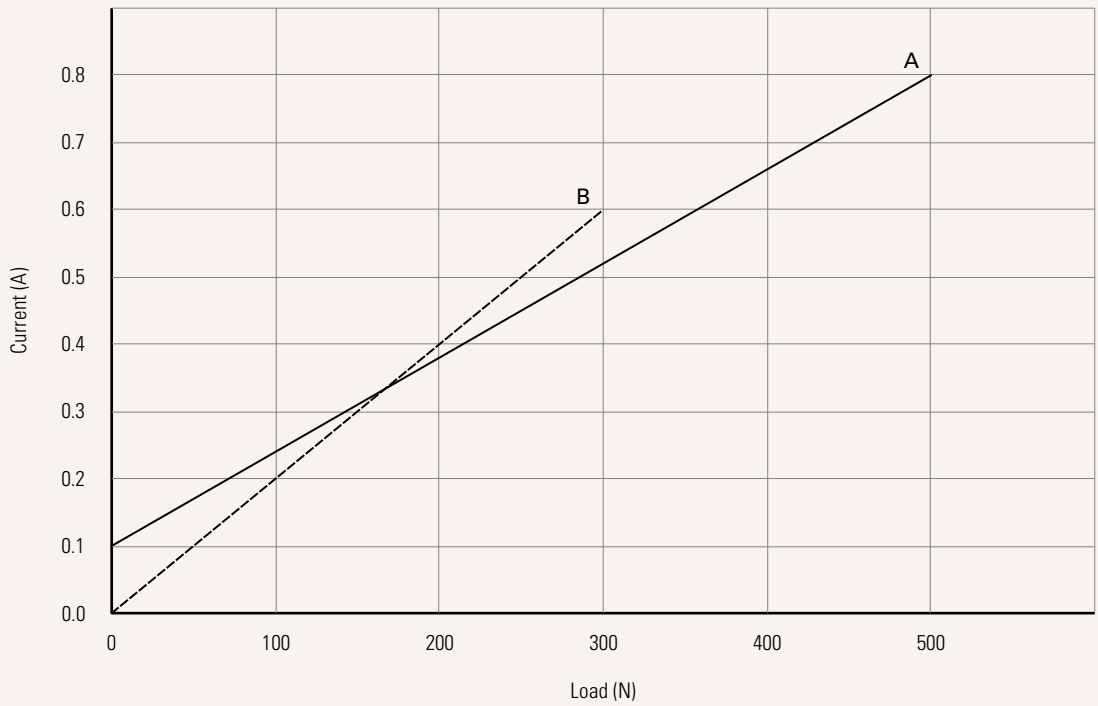
Performance Data (24V DC Motor)

Motor Speed (5000RPM, Duty cycle 10%)

Speed vs. Load



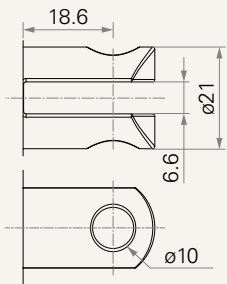
Current vs. Load



Voltage	2 = 24V	5 = 24V, PTC
Load and Speed	See page 2	
Stroke (mm)	Stroke limitation 050 / 044 / 040 / 034 / 031 / 025 / 015	
Retracted Length (mm)	143	
Rear Attachment (mm)	1 = Plastic, U clevis, width 6.6, depth 18.6, hole 10.0	
	See page 5	
Front Attachment (mm)	1 = Plastic, U clevis, width 6.6, depth 18.6, hole 10.0	
	See page 5	
Direction of Rear Attachment (Counterclockwise)	1 = 0°	2 = 90°
	See page 5	
Color	1 = Black	2 = Grey (Pantone 428C)
IP Rating	1 = Without	
Special Functions for Spindle Sub-Assembly	0 = Without (Standard)	
Functions for Limit Switches	1 = Two switches at full retracted / extended positions to cut current	
	3 = Two switches at full retracted / extended positions to send signal	
	See page 6	
Output Signals	0 = Without	4 = One Hall sensor
		5 = Two Hall sensors
Connector	1 = DIN 6P, 90° plug	3 = Small 01P, plug
	2 = Tinned leads	B = Y cable (direct cut, no water proof, no anti - pull)
	See page 6	
Cable Length (mm)	1 = Straight, 500	4 = Straight, 1250
	2 = Straight, 750	5 = Straight, 1500
	3 = Straight, 1000	6 = Straight, 2000
		7 = Curly, 200
		8 = Curly, 400
		B-H = For direct cut system
		See page 6

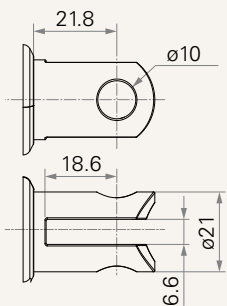
Rear Attachment (mm)

1 = Plastic, U clevis, width 6.6, depth 18.6, hole 10.0



Front Attachment (mm)

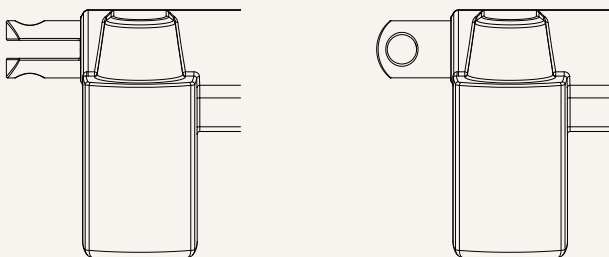
1 = Plastic, U clevis, width 6.6, depth 18.6, hole 10.0



Direction of Rear Attachment (Counterclockwise)

1 = 0°

2 = 90°



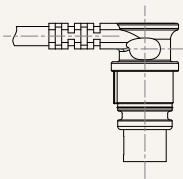
Functions for Limit Switches

Wire Definitions

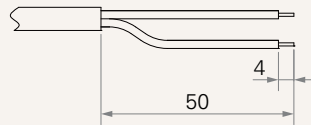
CODE	Pin					
	● 1 (Green)	● 2 (Red)	○ 3 (White)	● 4 (Black)	● 5 (Yellow)	● 6 (Blue)
1	extend (VDC+)	N/A	N/A	N/A	retract (VDC+)	N/A
3	extend (VDC+)	common	upper limit switch	N/A	retract (VDC+)	lower limit switch

Connector

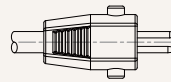
1 = DIN 6P, 90° plug



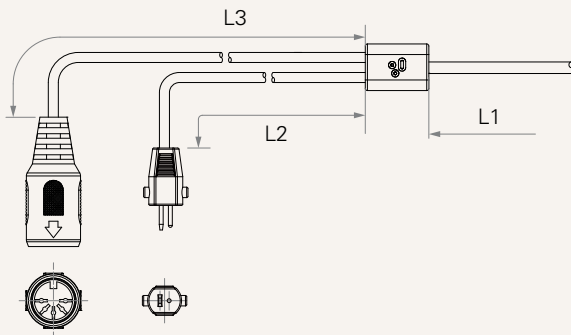
2 = Tinned leads



3 = Small 01P, plug



B = Y cable (direct cut, no water proof, no anti - pull)



Cable length for direct cut system (mm)

CODE	L1	L2	L3
B	100	100	100
C	100	1000	400
D	100	2700	500
E	1000	100	100
F	100	600	1000
G	1500	1000	1000
H	100	100	1200

Terms of Use

The user is responsible for determining the suitability of TiMOTION products for a specific application. TiMOTION products are subject to change without prior notice.