

HS series



Applicazioni / Applications:

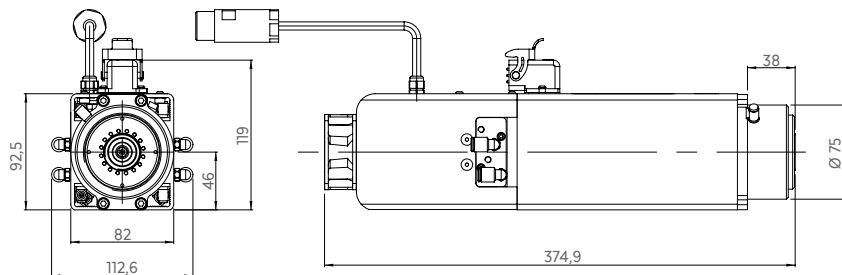
Realizzazione di insegne / Sign making

Occhiali / Eyeglasses

Robot / Robot

Piccoli centri di lavoro con ATC / Light CNC with ATC

Installazione su robot / Robotic installations

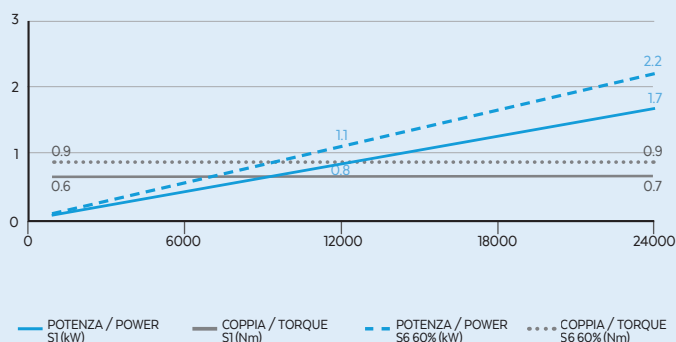


SPECIFICHE TECNICHE / TECHNICAL SPECIFICATIONS

	HS -1F 1.7/24 24 I20	HS -1F 1.7/24 30 I20	HS -1F 1.7/24 30 25E
Potenza (S1-S6) / Power (S1-S6)	1.7 - 2.2 kW	1.7 - 2.2 kW	1.7 - 2.2 kW
Velocità massima / Max speed	24.000 RPM	30.000 RPM	30.000 RPM
Velocità nominale / Rated speed	24.000 RPM	24.000 RPM	24.000 RPM
Coppia (S1-S6) / Torque (S1-S6)	0.7 - 0.9 Nm	0.7 - 0.9 Nm	0.7 - 0.9 Nm
Assorbimento corrente (S1-S6) / Current drawn (S1-S6)	4 - 5 A	4 - 5 A	4 - 5 A
Tipologia elettromandrino / Type of electrospindle	Asynchronous 2 Poles w/inverter	Asynchronous 2 Poles w/inverter	Asynchronous 2 Poles w/inverter
Tensione / Voltage	380 V	380 V	380 V
Attacco utensile / Tool holder	ISO20	ISO20	HSK25E
Raffreddamento / Cooling	Electrofan	Electrofan	Electrofan
Cambio tensile / Type of tool changer	Pneumatic	Pneumatic	Pneumatic
Lubrificazione cuscinetti / Bearing lubrication	Grease	Grease	Grease
Peso / Weight	9 Kg	9 Kg	9 Kg

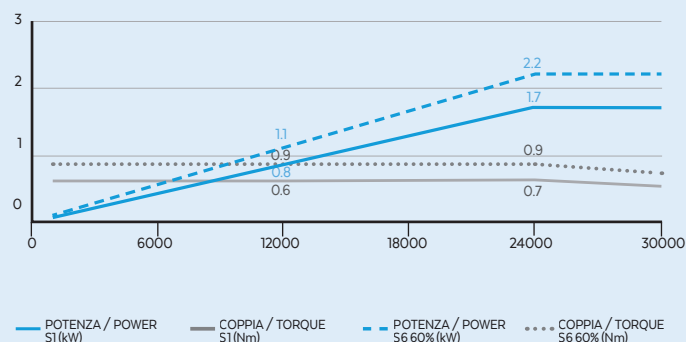
HS -1F 1.7/24 24

PRESTAZIONI / PERFORMANCES



HS -1F 1.7/24 30

PRESTAZIONI / PERFORMANCES



EQUIPAGGIAMENTO / EQUIPMENT



Labyrinth with air seal



Ceramic ball bearings



Sensors s1, s2, s3, s5



Taper cleaning



Connector spindle & machine side



Double effect pneumatic cylinder



Single voltage 220V

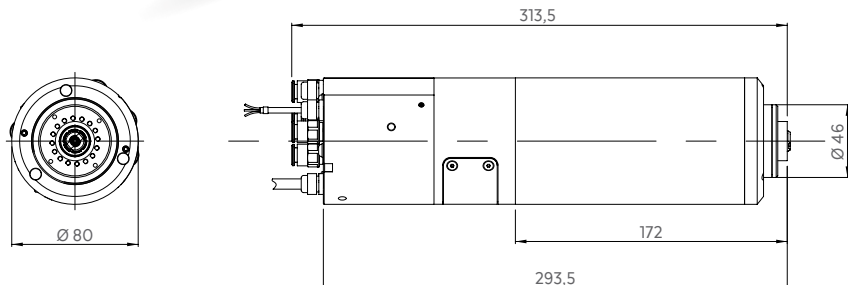
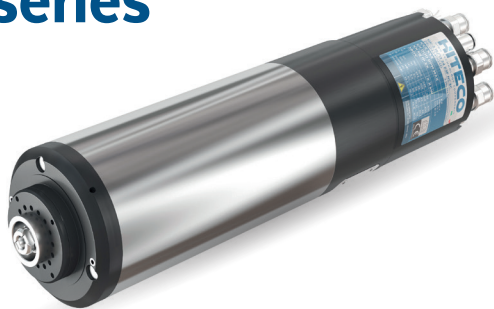


Vibration and speed monitoring

OPZIONALI / OPTIONS



HC series



Applicazioni / Applications:

Fresatura e scontornatura /
Milling and grinding contours

Foratura schede elettroniche /
Drilling electronic boards

Occhiali / Eyeglasses

Installazione su robot / Robotic installations

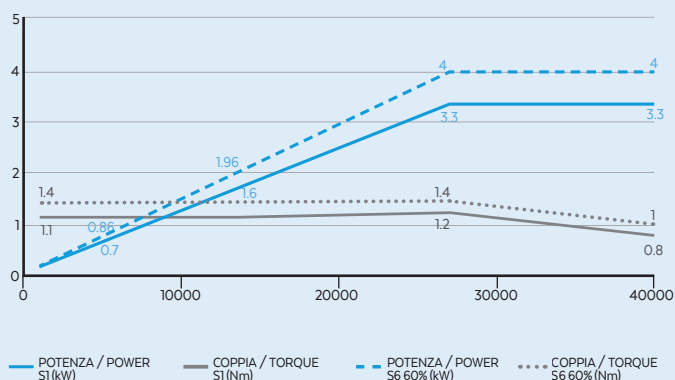


SPECIFICHE TECNICHE / TECHNICAL SPECIFICATIONS

	HC-2 3.3/27 40 I20	HC-2 3.3/27 40 25E	HC-2 3.3/27 50 25E	HC-2 3.3/27 50 25E
Potenza (S1-S6) / Power (S1-S6)	3.3 - 4 kW	3.3 - 4 kW	3.3 - 4 kW	3.3 - 4 kW
Velocità massima / Max speed	40.000 RPM	40.000 RPM	50.000 RPM	50.000 RPM
Velocità nominale / Rated speed	27.000 RPM	27.000 RPM	27.000 RPM	27.000 RPM
Coppia (S1-S6) / Torque (S1-S6)	1.2 - 1.4 Nm	1.2 - 1.4 Nm	1.2 - 1.4 Nm	1.2 - 1.4 Nm
Assorbimento corrente (S1-S6) / Current drawn (S1-S6)	8 - 9 A	8 - 9 A	8 - 9 A	14 - 16 A
Tipologia elettromandrino / Type of electrospindle	Asynchronous 4 Poles w/inverter	Asynchronous 4 Poles w/inverter	Asynchronous 4 Poles w/inverter	Asynchronous 4 Poles w/inverter
Tensione / Voltage	380 V	380 V	380 V	220 V
Attacco utensile / Tool holder	ISO20	HSK25E	HSK25E	HSK25E
Raffreddamento / Cooling	Liquid	Liquid	Liquid	Liquid
Cambio tensile / Type of tool changer	Pneumatic	Pneumatic	Pneumatic	Pneumatic
Lubrificazione cuscinetti / Bearing lubrication	Grease	Grease	Grease	Grease
Peso / Weight	8 Kg	8 Kg	8 Kg	8 Kg

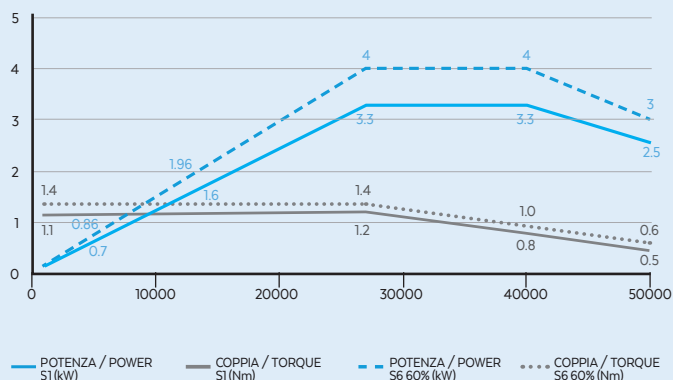
HC-2 3.3/27 40

PRESTAZIONI / PERFORMANCES



HC-2 3.3/27 50

PRESTAZIONI / PERFORMANCES



EQUIPAGGIAMENTO / EQUIPMENT



Labyrinth
with air
seal



Ceramic
ball
bearings



Sensors
s1, s2, s3, s5



Taper
cleaning



Double effect
pneumatic
cylinder

OPZIONALI / OPTIONS



Circular
connector
CC



Vibration and
speed monitoring

