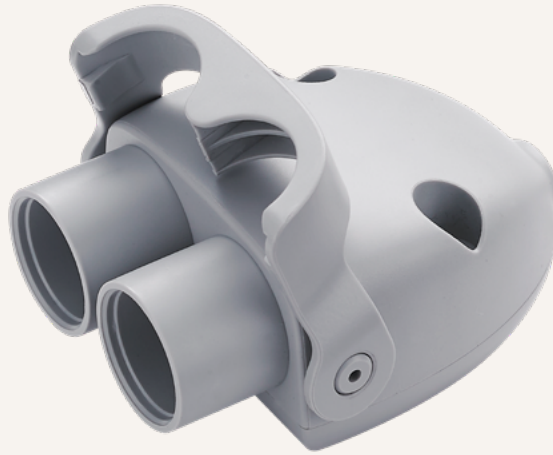


# TYC2

series



---

## Product Segments

- **Care Motion**
- **Comfort Motion**
- **Ergo Motion**
- **Industrial Motion**

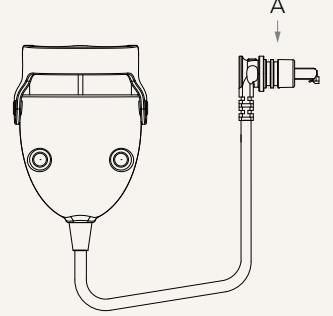
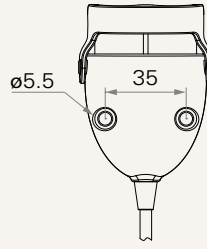
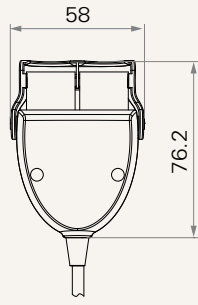
---

## General Features

Extension cable for multiple hand control with RJ connector and socket  
IP rating Up to IP66W

**Drawing**

Standard Dimensions  
(mm)



## TYC2

Version: 20160817-A

<b>Connector or Socket</b>	1 = Connector	2 = Socket with clip	
<b>Connector or Socket Type</b>	8 = RJ 10pins		
<b>Connector Angle</b>	1 = 90°	2 = 180°	
	Note: if selected the option#2_"socket with clip" of connector or socket, please don't compatible with the option#1_90° of connector angle.		
<b>O Ring Color</b>	0 = Without 1 = Red (connect to the device without MCU) 2 = Yellow (connect to the device with MCU)	3 = Blue 4 = Black 5 = White	
	Note: if chose the option #2_socket with clip of connector or socket, please select option #0_without of O ring color		
<b>Cable Length (mm)</b>	1 = Straight, 1000	2 = Straight, 200	3 = Straight, 3000
<b>Socket</b>	1 = RJ 10pin socket + RJ 10pin socket		
<b>Color</b>	1 = Black	2 = Grey (Pantone 428C)	
<b>IP Rating</b>	4 = IP66W		

### Terms of Use

The user is responsible for determining the suitability of TiMOTION products for a specific application. TiMOTION products are subject to change without prior notice.