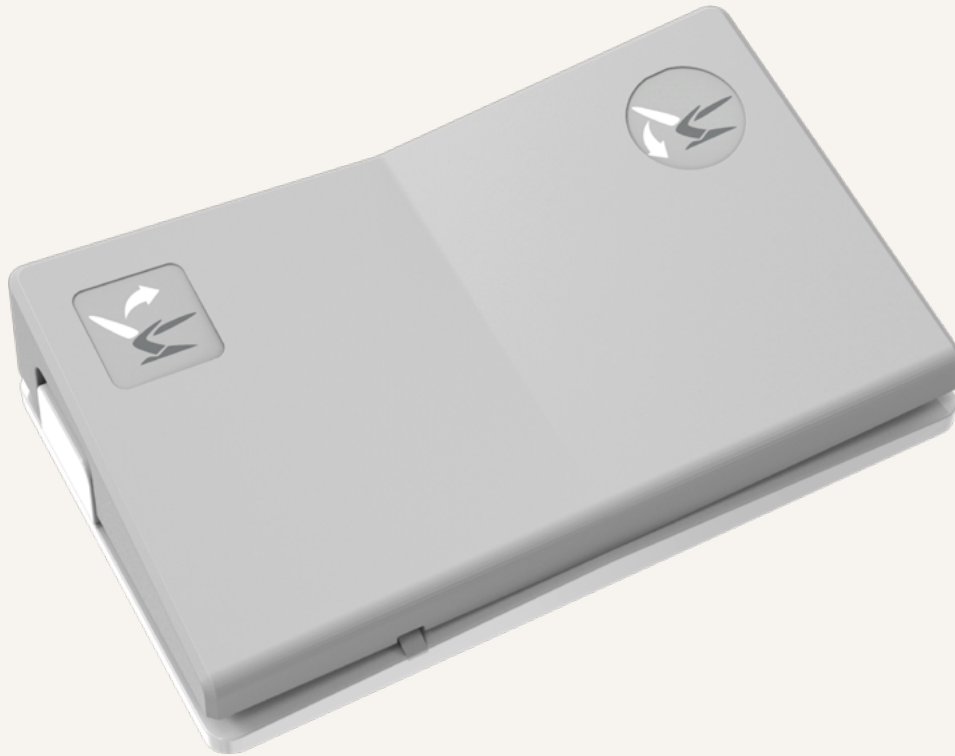


TFS9

series



Product Segments

- **Care Motion**

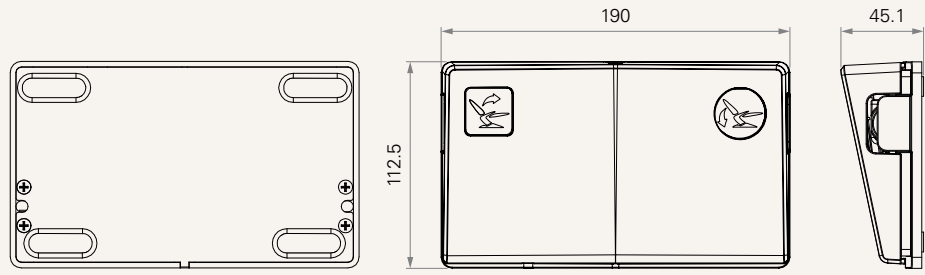
TFS9 is a medical foot control specially designed for medical beds, dentist chairs, nursing chairs for home use, and treatment tables. It has 2 buttons as standard, while 4 buttons are optional. The TFS9 is a wired or wireless control, depending on the customer's preference.

General Features

Max. available buttons	4
Color	Black, grey
IP rating	IP66
Options	Built-in back up battery

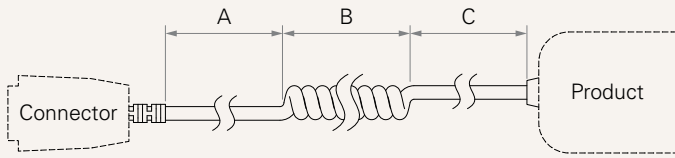
Drawing

Standard Dimensions
(mm)



MCU	0 = Without	1 = With	
Control Box Type	0 = Without MCU	1 = With MCU	
Connection	0 = 2.4Ghz, Cableless	1 = Cable	
Button Definition	Note: please contact TiMOTION before making an order		
Plug	0 = Without	1 = DIN 8pin	2 = RJ 10P
Plug Angle	0 = Without	1 = 90°	2 = 180°
Cable Length (mm) See page 4	0 = Without	1~7 = 1~7	
Color	1 = Black	2 = Pantone 428C	
IP Rating	1 = IP54	2 = IP66	
Built-in Back-up Battery	0 = Without	1 = AAA dry cell * 2 pcs	
Add on Switch	0 = Without	1 = Add on one more TFS9	

Cable Length



Cable Section (mm)

CODE	A	B	C
1	1000	0	0
2	1500	0	0
3	2000	0	0
4	4000	0	0
5	1000	300	200
6	1200	300	300
7	1000	200	200

Terms of Use

The user is responsible for determining the suitability of TiMOTION products for a specific application. TiMOTION products are subject to change without prior notice.