

TEK28_{series}

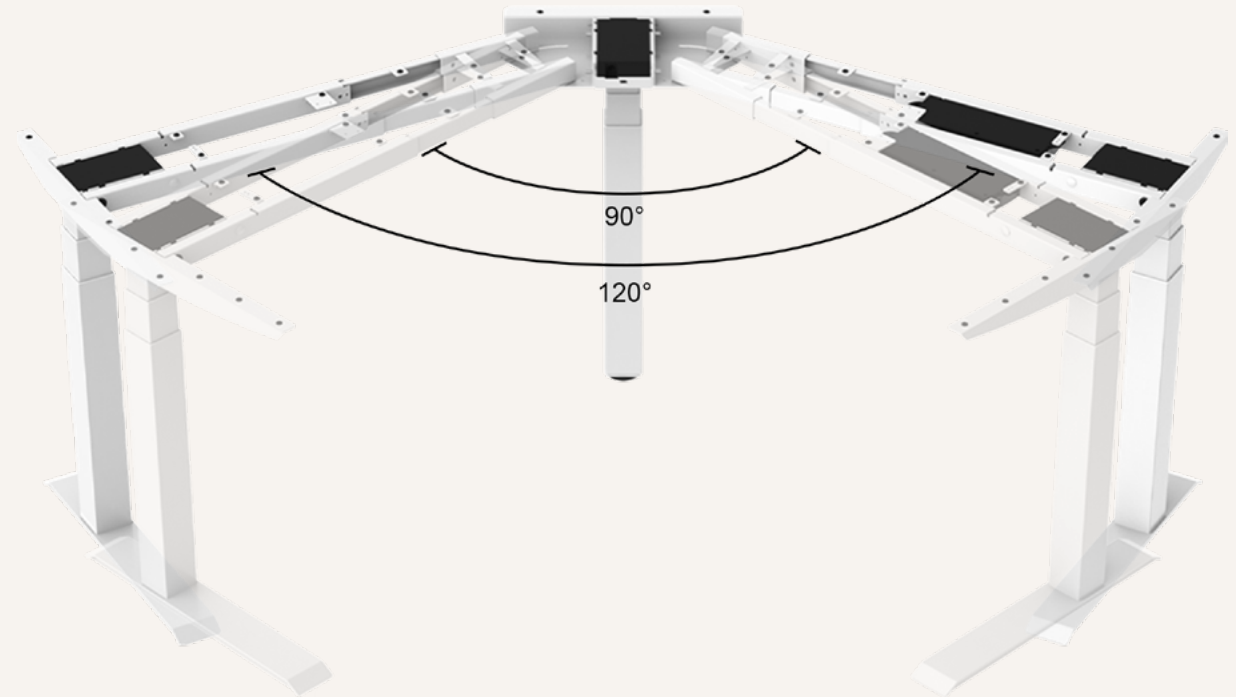
90° or 120° Three Leg Desk Frame

General Features

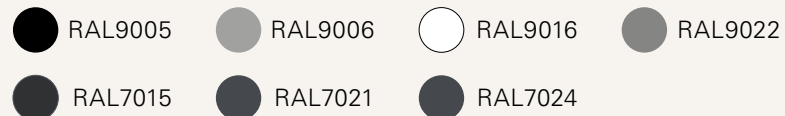
| | |
|-------------------|---|
| Max. load | 120kg or 150kg* |
| Constant Speed | 2-Stage Column: 31 or 33 mm/s* 3-Stage Column: 38 or 40 mm/s* |
| Weight of package | 62Kg* |
| Standby power | < 0.1W |
| Accessories | USB Chargers (TFA1/TFA3), Anti-Collision Sensor (TCS1), Wireless Chargers (TWC) |

Multiple column and control options
High strength and stability – Steel construction

*It varies upon the selection of components.



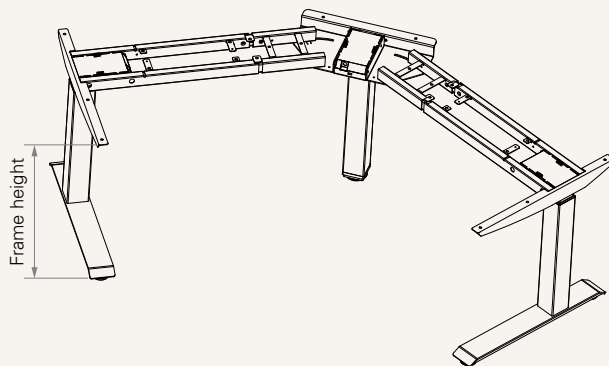
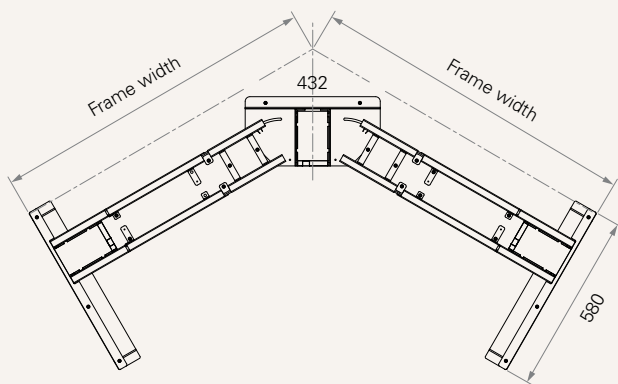
Color (RAL Classic)



*For more color options, please consult your sales representative.



Dimension



Frame & Work Surface

| Frame dimensions (mm) | Recommended work surface dimensions (mm) | |
|-----------------------|--|------------|
| Width (mm) | Width (mm) | Depth (mm) |
| 90°: 1183~1680 | 1183~1853 | 700~900 |
| 120°: 1050~1610 | 1048~1672 | 700~900 |

Hight Range

| Column type | Frame height (mm) | Stroke (mm) |
|-------------|-------------------|-------------|
| 3-Stage | 630~1280 | 650 |
| 3-Stage (M) | 600~1260 | 660 |
| 3-Stage (S) | 560~1220 | 660 |
| 2-Stage | 680~1180 | 500 |

TL Model

• 2-Stage



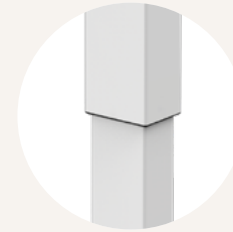
TL13
Square
70 x 70 mm



TL14
Round
ø70 mm



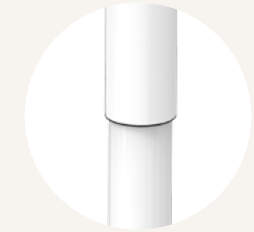
TL15
Rectangular
80 x 60 mm



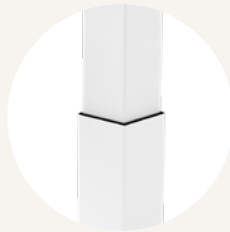
TL26
Rectangular
80 x 60 mm



TL28
Square
70 x 70 mm



TL29
Round
ø70 mm



TL13K
Square
70 x 70 mm



TL14K
Round
ø70 mm



TL29K
Round
ø70 mm



TL30K
Rectangular
90 x 60 mm



TL32K
Rectangular
83 x 53 mm



TL32KR
Rectangular
83 x 53 mm



TL13S
Square
70 x 70 mm



TL30S
Rectangular
90 x 60 mm



TL32S
Rectangular
83 x 53 mm



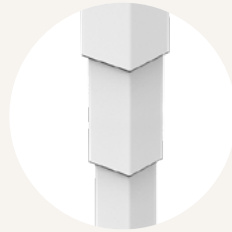
TL32SR
Rectangular
83 x 53 mm

TL Model

• 3-Stage



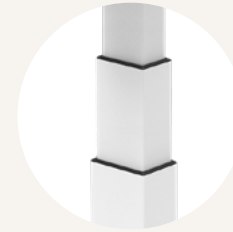
TL4
Square
70 x 70 mm



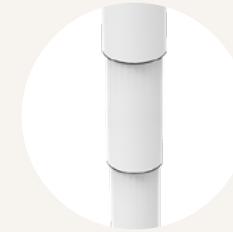
TL7
Square
70 x 70 mm



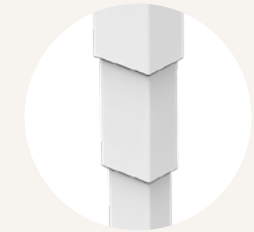
TL9
Round
ø70 mm



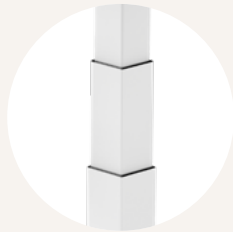
TL10
Rectangular
80 x 60 mm



TL11
Round
ø70 mm



TL12
Rectangular
80 x 60 mm



TL4K
Square
70 x 70 mm



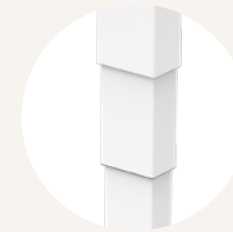
TL9K
Round
ø70 mm



TL31K
Rectangular
90 x 60 mm



TL33K
Rectangular
83 x 53 mm



TL33KR
Rectangular
83 x 53 mm



TL31S
Rectangular
90 x 60 mm



TL33S
Rectangular
83 x 53 mm

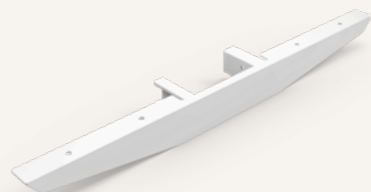


TL33SR
Rectangular
83 x 53 mm

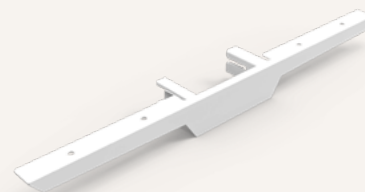
End Pipe E1 & E2 (mm)



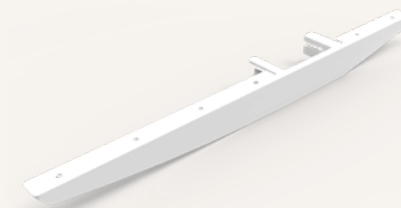
Style A
(for fixed tabletop)



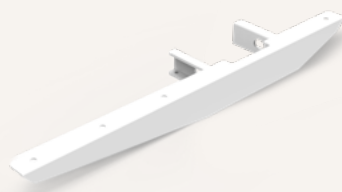
Style B
(for fixed tabletop)



Style C
(for C leg, fixed tabletop)



Style C
(for C leg, fixed tabletop)



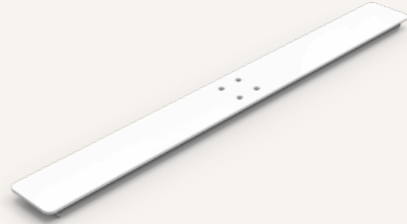
Frame Width (mm)

| End pipe | | Type | 90° frame | 120° frame |
|----------|--------|-----------|-----------|------------|
| Code | Length | | L1 & L2 | L1 & L2 |
| 1 | 600 | For T-leg | 1293~1853 | 1112~1672 |
| 7 | 580 | For C-leg | 1183~1743 | 1048~1608 |

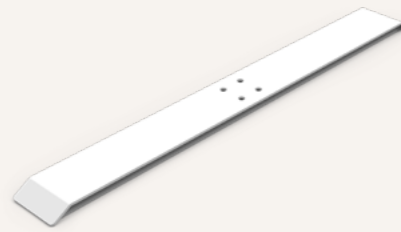
Foot F1 & F2 (mm)



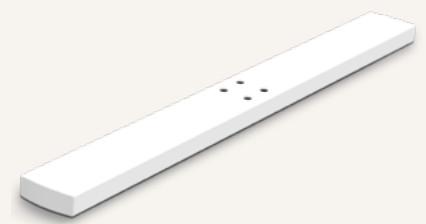
Style A



Style B



Style D



Style E



Style H



Style J



Foot F1 & F2 (mm)



| Code | Style | Frame type | Length (mm) |
|------|-------|------------|-------------|
| 0 | - | Without | - |
| AT1 | A | T | 750 |
| AT2 | A | T | 680 |
| AT4 | A | T | 600 |
| AT6 | A | T | 550 |
| AT7 | A | T | 350 |
| AC1 | A | C | 750 |
| AC4 | A | C | 600 |
| AC5 | A | C | 580 |
| BT1 | B | T | 750 |
| BT2 | B | T | 680 |
| BT6 | B | T | 550 |
| BC1 | B | C | 750 |
| BC2 | B | C | 680 |
| BC5 | B | C | 580 |
| DT1 | D | T | 750 |
| DT6 | D | T | 550 |
| ET1 | E | T | 750 |
| HT2 | H | T | 680 |
| JC3 | J | C | 650 |

Hand Control



1 = TH37



2 = TFH8



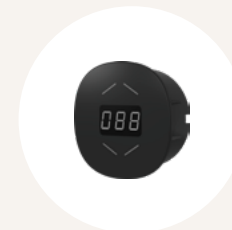
3 = TDH1



4 = TDH2



5 = TDH3



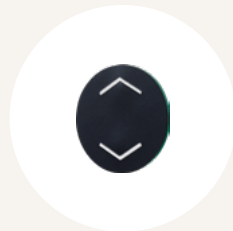
6 = TDH4



7 = TDH5



8 = TDH6



9 = TFH13



B = TH14



C = TFH21



D = TDH8P



E = TDH8



F = TDH8D



G = TDH11P



H = TDH12P



K = TDH16



L = TDH6PR



M = TDH5PR



N = TDH13P



P = TDH15



Q = TDH18P



R = TDH17



S = TDH20P

Hand Control



T = TDH9P



U = TDH27P



V = TDH24P



W = TDH29



Y = TDH5C

Accessories (optional)



TCS1

TCS1 is a collision sensor based on t-touch technology which does not require any additional hardware upgrades.



TFA1

A charger with 2 USB ports. Can be mounted on the table top.



TFA3

A charger with 2 USB ports. Can be mounted to the desk front side.



TWC

Designed for wireless charging of mobile devices. Can be mounted on the table top.

TEK28 Ordering Key

TEK28

Version: 20230321-F

| | | | | | | | | |
|----------------------------------|--|-------------|------------------------------|---------------|---|---------------|------------------------------|---------------|
| TL Model | 0004 = TL4 | 0011 = TL11 | 0015 = TL15 | 004K = TL4K | 029K = TL29K | 033K = TL33K | 030S = TL30S | 32SR = TL32SR |
| See page 3-4 | 0007 = TL7 | 0012 = TL12 | 0026 = TL26 | 009K = TL9K | 030K = TL30K | 32KR = TL32KR | 031S = TL31S | 33SR = TL33SR |
| | 0009 = TL9 | 0013 = TL13 | 0028 = TL28 | 0013K = TL13K | 031K = TL31K | 33KR = TL33KR | 032S = TL32S | |
| | 0010 = TL10 | 0014 = TL14 | 0029 = TL29 | 0014K = TL14K | 032K = TL32K | 013S = TL13S | 033S = TL33S | |
| Foot F1 & F2 (mm) | See page 6-7 | | | | | | | |
| Foot F3 (mm) | 1 = Foot cap + Big shoe, standard | | 2 = Style A, Thickness: 5350 | | 3 = Big shoe (requires column with extended outer tube) | | | |
| Color | 1 = Black (RAL 9005) | | 3 = White (RAL 9016) | | 5 = Slate grey (RAL 7015) | | 7 = Graphite grey (RAL 7024) | |
| | 2 = Grey (RAL 9006) | | 4 = Special grey (RAL 9022) | | 6 = Matte black (RAL 7021) | | | |
| TC | 0 = Without | 1 = TC16 | 2 = TC16P | | | | | |
| Hand Control | See page 8-9 | | | | | | | |
| End Pipe E1 & E2 (mm) | 1 = Style A, fixation holes, E1&E2: 600 | | | | 5 = Style A, fixation holes, E1&E2: 550 | | | |
| See page 5 | 2 = Style A, fixation holes, E1&E2: 500 | | | | 6 = Style C, fixation holes, E1&E2: 700, for C-leg | | | |
| | 3 = Style B, fixation holes, E1&E2: 600 | | | | 7 = Style C, fixation holes, E1&E2: 580, for C-leg | | | |
| | 4 = Style B, fixation holes, E1&E2: 500 | | | | | | | |
| Desk Frame (mm) | 1 = 90°-120° desk frame, Standard | | | | | | | |
| Assembly Manual | 0 = Without | | | | 3 = Chinese, No logo, Black / White printing | | | |
| | C = Chinese, TiMOTION logo, Black / White printing | | | | 4 = English, No logo, Black / White printing | | | |
| | E = English, TiMOTION logo, Black / White printing | | | | 5 = Chinese, No logo, colour printing | | | |
| | 1 = Chinese, TiMOTION logo, colour printing | | | | 6 = English, No logo, colour printing | | | |
| | 2 = English, TiMOTION logo, colour printing | | | | | | | |

Terms of Use

The user is responsible for determining the suitability of TiMOTION products for a specific application. TiMOTION products are subject to change without prior notice.