

TEK23 series

Single Crossbar Desk Frame

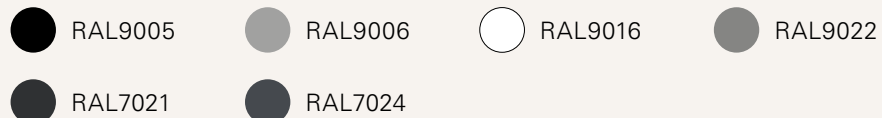
General Features

Max. load	100kg
Constant speed	3-Stage Column: 38mm/s 2-Stage Column: 31mm/s
Weight of package	28.3kg*
Standby power	< 0.1W
Accessories	USB Chargers (TFA1/TFA3), Anti-Collision Sensor (TCS1), Wireless Chargers (TWC)

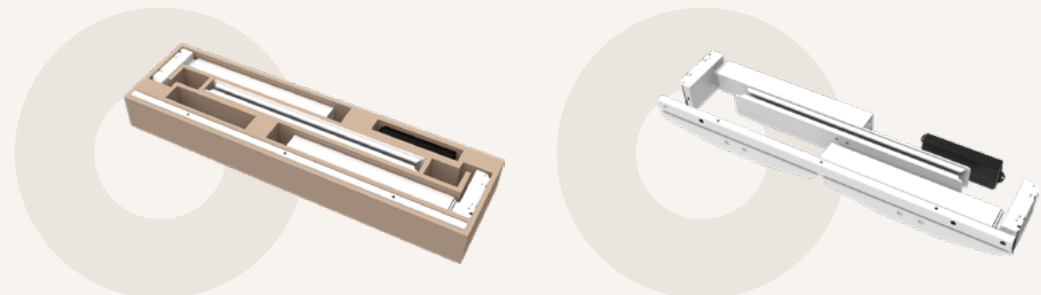
Multiple column and control options
High strength and stability – Steel construction



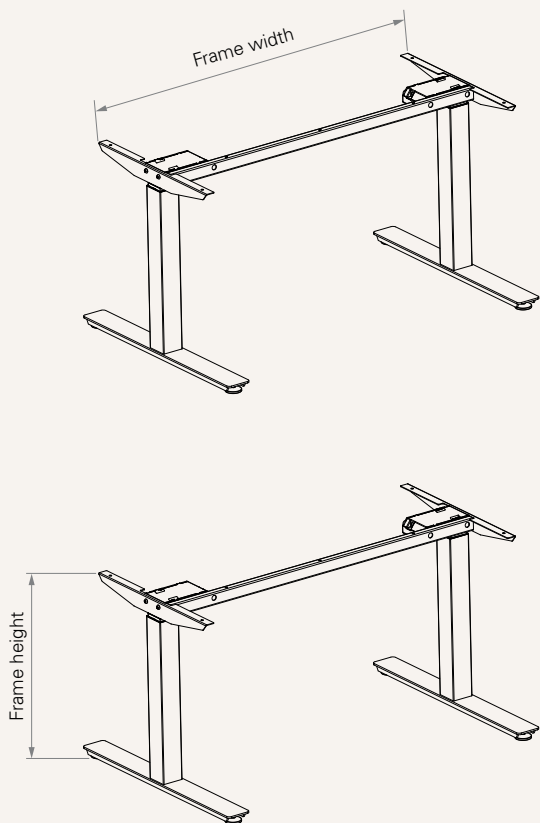
Color (RAL Classic)



*For more color options, please consult your sales representative.



Dimension



Frame & Work Surface

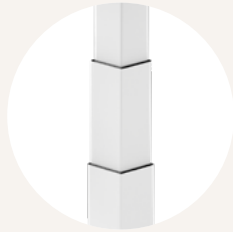
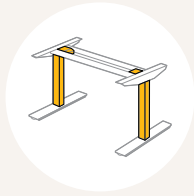
Frame dimensions (mm)	Recommended work surface dimensions (mm)	
Width (mm)	Width (mm)	Depth (mm)
1160	1200	700~800
950~1550	1200	700~800
1050~1850	1200	700~800

Hight Range

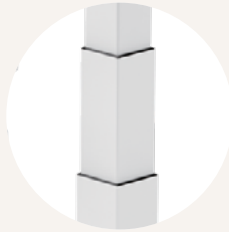
Column type	Frame height (mm)	Stroke (mm)
3-Stage	630~1280	650
3-Stage (M)	600~1260	660
3-Stage (S)	560~1220	660
2-Stage	680~1180	500

TL Model

• 3-Stage



TL4K
Square
70 x 70 mm



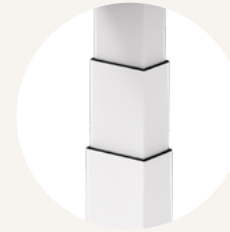
TL4S
Square
70 x 70 mm



TL9K
Round
ø70 mm



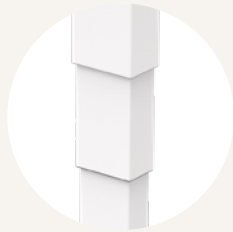
TL31K
Rectangular
90 x 60 mm



TL31S
Rectangular
90 x 60 mm



TL33K
Rectangular
83 x 53 mm



TL33KR
Rectangular
83 x 53 mm



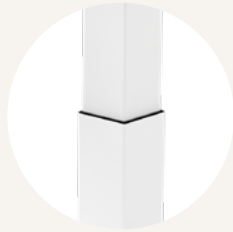
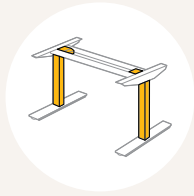
TL33S
Rectangular
83 x 53 mm



TL33SR
Rectangular
83 x 53 mm

TL Model

• 2-Stage



TL13K
Square
70 x 70 mm



TL13S
Square
70 x 70 mm



TL14K
Round
ø70 mm



TL30K
Rectangular
90 x 60 mm



TL30S
Rectangular
90 x 60 mm



TL32K
Rectangular
83 x 53 mm



TL32S
Rectangular
83 x 53 mm

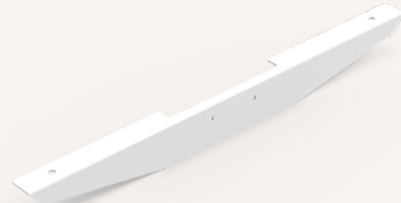


TL32SR
Rectangular
83 x 53 mm

End Pipe



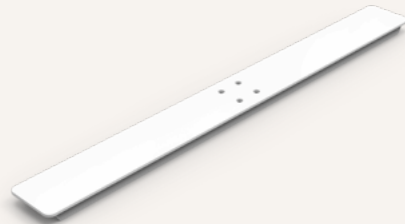
Style A1
(Fixation holes for tabletop)



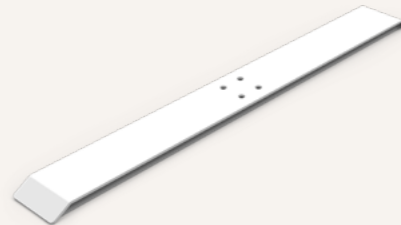
Foot



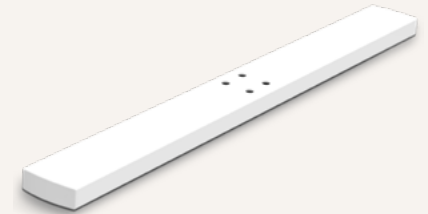
Style A



Style B



Style D



Style E



Style H



Style J



Foot (mm)



Code	Style	Frame type	Length (mm)
0	-	Without	-
AT1	A	T	750
AT2	A	T	680
AT4	A	T	600
AT6	A	T	550
AT7	A	T	350
AC1	A	C	750
AC4	A	C	600
AC5	A	C	580
BT1	B	T	750
BT2	B	T	680
BT6	B	T	550
BC1	B	C	750
BC2	B	C	680
BC5	B	C	580
DT1	D	T	750
DT6	D	T	550
ET1	E	T	750
HT2	H	T	680
JC3	J	C	650

Hand Control



1 = TH37



2 = TFH8



3 = TDH1



4 = TDH2



5 = TDH3



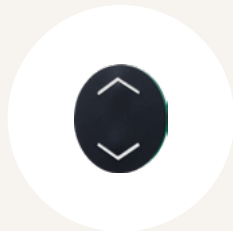
6 = TDH4



7 = TDH5



8 = TDH6



9 = TFH13



B = TH14



C = TFH21



D = TDH8P



E = TDH8



F = TDH8D



G = TDH11P



H = TDH12P



K = TDH16



L = TDH6PR



M = TDH5PR



N = TDH13P



P = TDH15



Q = TDH18P



R = TDH17



S = TDH20P

Hand Control



T = TDH9P



U = TDH27P



V = TDH24P



W = TDH29



Y = TDH5C

Accessories (optional)



TCS1

TCS1 is a collision sensor based on t-touch technology which does not require any additional hardware upgrades.



TFA1

A charger with 2 USB ports. Can be mounted on the table top.



TFA3

A charger with 2 USB ports. Can be mounted to the desk front side.



TWC

Designed for wireless charging of mobile devices. Can be mounted on the table top.

TEK23 Ordering Key

TEK23

Version: 20230316-G

TL Model	004S = TL4S	031S = TL31S	32SR = TL32SR	009K = TL9K	030K = TL30K	033K = TL33K
See page 3-4	013S = TL13S	032S = TL32S	33SR = TL33SR	013K = TL13K	031K = TL31K	33KR = TL33KR
	030S = TL30S	033S = TL33S	004K = TL4K	014K = TL14K	032K = TL32K	
Foot (mm)	See page 5-6					
Color	1 = Black (RAL 9005)		3 = White (RAL 9016)		6 = Matte black (RAL 7021)	
	2 = Grey (RAL 9006)		4 = Special grey (RAL 9022)		7 = Dark grey (RAL 7024)	
TC Model	3 = TC15S					
Hand Control	See page 7-8					
End Pipe (mm)	1 = Style A1, fixation holes for tabletop, fixed with motor house, E1 & E2: 550			2 = Style A1, fixation holes, fixed with motor house, E1 & E2: 360		
See page 5						
Desk Frame (mm)	1 = Fixed frame, outer pipe 25*40, W:1160			3 = Adjustable frame, outer pipe 20*40, W:1050-1850		
	2 = Adjustable frame, outer pipe 20*40, W:950-1550					
Assembly Manual	0 = Without			3 = Chinese, No logo, Black / White printing		
	C = Chinese, TiMOTION logo, Black / White printing			4 = English, No logo, Black / White printing		
	E = English, TiMOTION logo, Black / White printing			5 = Chinese, No logo, colour printing		
	1 = Chinese, TiMOTION logo, colour printing			6 = English, No logo, colour printing		
	2 = English, TiMOTION logo, colour printing					
Packaging	1 = EPE packaging		2 = Eco-friendly Packaging (paper), standard			

Terms of Use

The user is responsible for determining the suitability of TiMOTION products for a specific application. TiMOTION products are subject to change without prior notice.