

# TEK09

## series

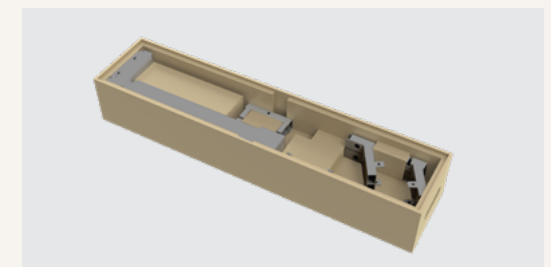
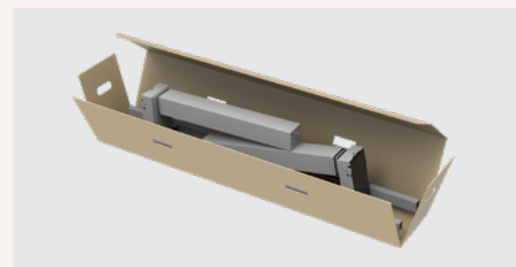
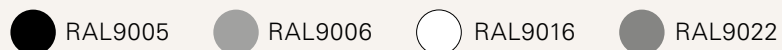
### Product Segments

#### • Ergo Motion

#### General Features

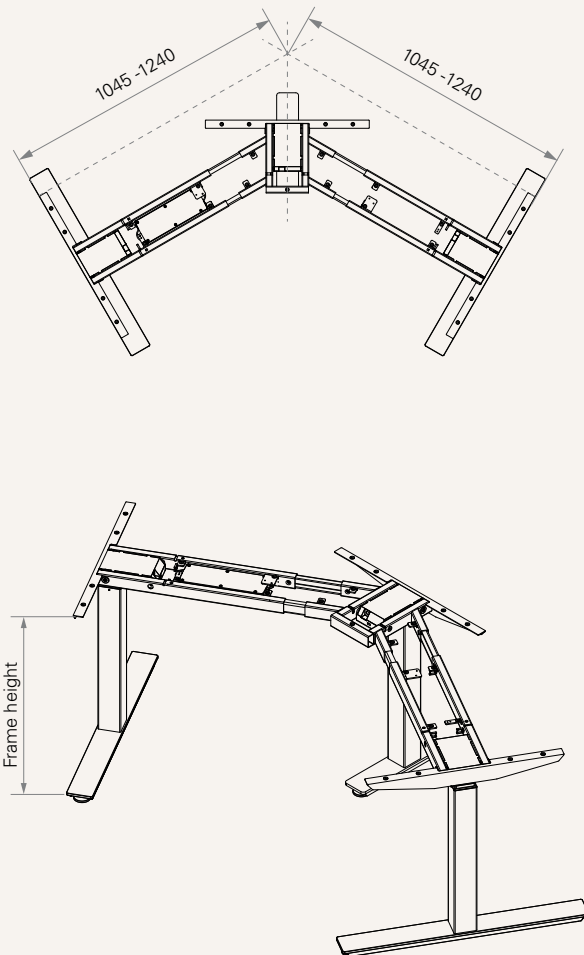
Frame Orientation	120° Shape
Maximum Load	120 or 150 kg
Constant Speed (<80Kg)	3 Stage Column 40mm/s 2 Stage Column 33mm/s
Weight of TEK09 Package	62 Kg* <small>*The actual weight of package may vary due to customer's selection of components.</small>
Accessories (optional)	Enhanced anti-collision feature with t-touch, TFA1/3, TWC
Low Standby Power	<0.1W
Multiple column and control options	
High strength and stability – Steel construction	
Modular design – Easily change the TEK01 rectangular desk frame into the 120° configuration	

#### Color (RAL Classic)



**Drawing**

Dimensions



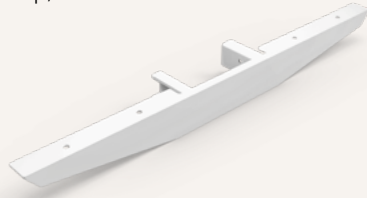
Frame Dimensions	Recommended Work Surface Dimensions	
Width (mm)	Width (mm)	Depth (mm)
1045~1240	1070~1265	700~900

Column Type	Frame Height (mm)	Stroke (mm)
<b>3-Stage</b>	630~1280	650
<b>3-Stage (M)</b>	600~1260	660
<b>3-Stage (S)</b>	560~1220	660
<b>2-Stage</b>	680~1180	500

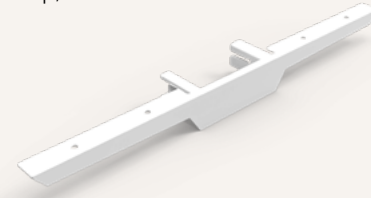
End Pipes



Style A  
(for fixed tabletop)



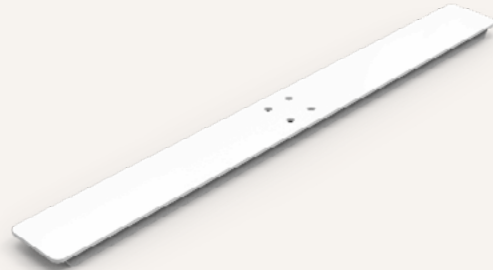
Style B  
(for fixed tabletop)



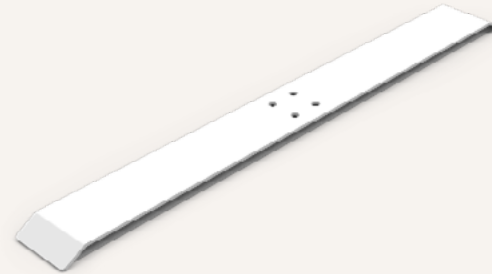
Foot



Style A

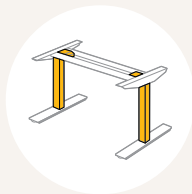


Style B

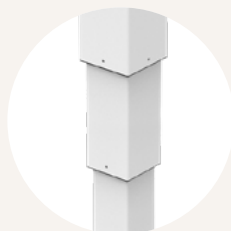


Lifting Columns

• 3-Stage



TL4  
Square  
70 x 70 mm



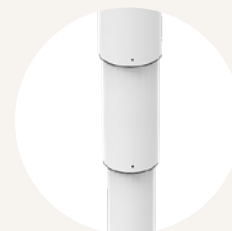
TL7  
Square  
70 x 70 mm



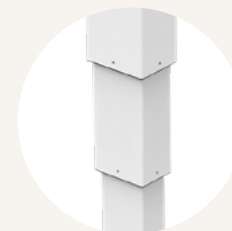
TL9  
Round  
ø70 mm



TL10  
Rectangular  
80 x 60 mm



TL11  
Round  
ø70 mm



TL12  
Rectangular  
80 x 60 mm

• 2-Stage



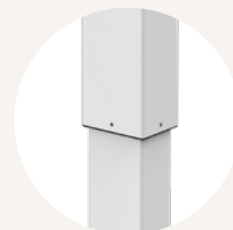
TL13  
Square  
70 x 70 mm



TL14  
Round  
ø70 mm



TL15  
Rectangular  
80 x 60 mm



TL26  
Rectangular  
80 x 60 mm

Hand Control



1 = TH37



2 = TFH8



3 = TDH1



4 = TDH2



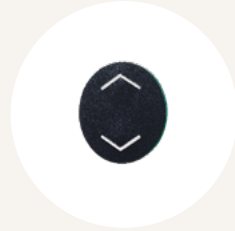
5 = TDH3



6 = TDH4



7 = TDH5



9 = TFH13



B = TH14



C = TFH21



D = TDH8P

Accessories (optional)



TCS1

TCS1 is a collision sensor based on t-touch technology which does not require any additional hardware upgrades.



TFA1

A charger with 2 USB ports. Can be mounted on the table top.



TFA3

A charger with 2 USB ports. Can be mounted to the desk front side.



TWC

Designed for wireless charging of mobile devices. Can be mounted on the table top.

# TEK09 Ordering Key

## TEK09

Version: 20180120-C

<b>TL Model</b> <a href="#">See page 4</a>	04 = TL4 07 = TL7	09 = TL9 10 = TL10	11 = TL11 12 = TL12	13 = TL13 14 = TL14	15 = TL15 26 = TL26	
<b>Foot (mm)</b> <a href="#">See page 3</a>	1 = Style A, thickness 5, F1 & F2: 750, Standard		2 = Style B, thickness 5, F1 & F2: 750			
<b>Color</b>	1 = Black (RAL 9005)	2 = Grey (RAL 9006)	3 = White (RAL 9016)	4 = Special grey (RAL 9022)		
<b>TC Model</b>	2 = TC16					
<b>Handset Model</b> <a href="#">See page 5</a>	1 = TH37 2 = TFH8	3 = TDH1 4 = TDH2	5 = TDH3 6 = TDH4	7 = TDH5 9 = TFH13	B = TH14 C = TFH21	D = TDH8P
<b>End Pipe (mm)</b> <a href="#">See page 3</a>	1 = Style A, fixation holes, E1 & E2 & E3: 600, Standard		2 = Style B, fixation holes, E1 & E2 & E3: 600			
<b>Desk Frame (mm)</b>	1 = Normal, outer pipe 25*40, L1=L2: 1045-1240					

### Terms of Use

The user is responsible for determining the suitability of TiMOTION products for a specific application. TiMOTION products are subject to change without prior notice.