

# TEK08S series

## Manually Operated Desk Frame

### General Features

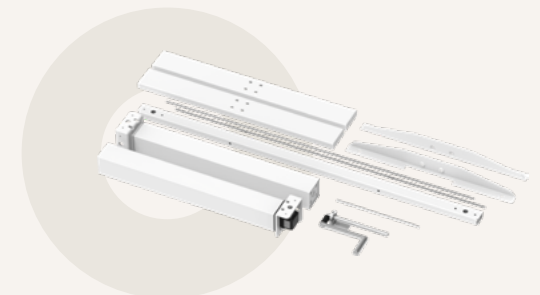
Max. load 80kg  
 Constant speed Lifting ratio: 3 or 9mm / turn  
 Weight of package 29kg\*  
 High strength and stability – Steel construction  
 Manually operated by a foldable hand crank which has three material options- wood, metal or plastic.



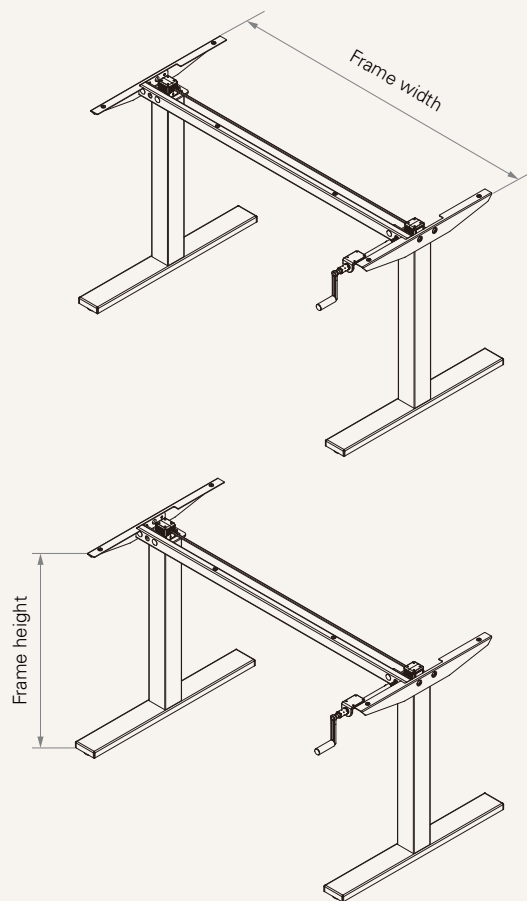
### Color (RAL Classic)

- RAL9005
- RAL9006
- RAL9016
- RAL9022
- RAL7021
- RAL7024

\*For more color options, please consult your sales representative.



**Dimension**



**Frame & Work Surface**

Frame dimensions (mm)	Recommended work surface dimensions (mm)	
Width (mm)	Width (mm)	Depth (mm)
1160	1210	600~1050

Note: It varies upon the selection of hand crank hex shaft.

**Hight Range**

Column type	Frame height (mm)	Stroke (mm)
2-Stage	680~1130	450

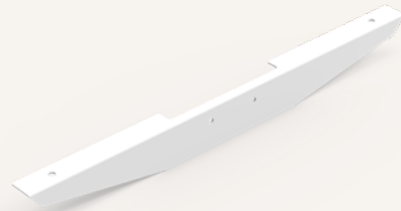
**Load and Speed**

CODE	Push (N)	Self locking force (N)	Lead (mm / turn)	Operating torque (Nm)	
				No load	With load
<b>B</b>	800	800	3	2.5	4
<b>C</b>	800	800	9	4	7

**End Pipe**



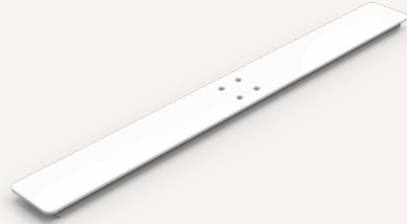
Style A1  
( Fixation holes for tabletop)



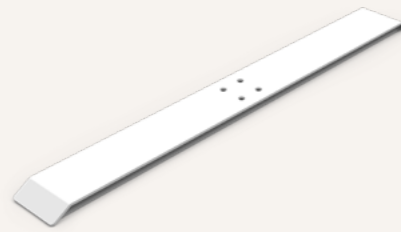
Foot



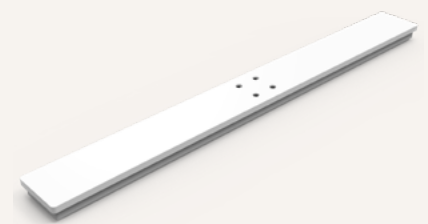
Style A



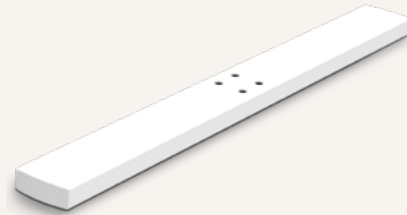
Style B



Style C



Style D



Style E



Style F



Style H



Style J



Foot

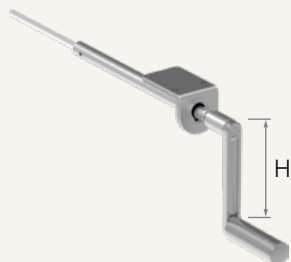


Code	Style	Frame type	Length (mm)
<b>000</b>	-	Without	-
<b>AT1</b>	A	T	750
<b>AT2</b>	A	T	680
<b>AT4</b>	A	T	600
<b>AT6</b>	A	T	550
<b>AC1</b>	A	C	750
<b>AC4</b>	A	C	600
<b>AC5</b>	A	C	580
<b>BT1</b>	B	T	750
<b>BT2</b>	B	T	680
<b>BT6</b>	B	T	550
<b>BC1</b>	B	C	750
<b>BC2</b>	B	C	680
<b>BC5</b>	B	C	580
<b>CT1</b>	C	T	750
<b>CT2</b>	C	T	680
<b>CT4</b>	C	T	600
<b>CT6</b>	C	T	550
<b>DT1</b>	D	T	750
<b>DT6</b>	D	T	550
<b>ET1</b>	E	T	750
<b>FT2</b>	F	T	680
<b>HT2</b>	H	T	680
<b>JC3</b>	J	C	650

**Hand Crank Set (mm)**



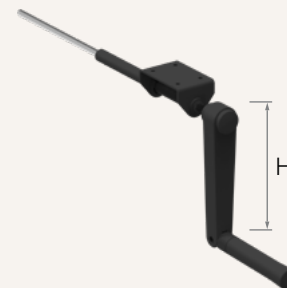
Aluminum handler  
1 = H = 90  
2 = H = 140



Wooden handler  
3 = H = 90  
4 = H = 140



Plastic hand crank  
5 = H = 127



**Compatible Tabletop Depth (mm)**

End pipe (mm)		1
<b>HEX shaft for hand crank</b>		600, T-leg
<b>1</b>	Alu / Wooden	600~850
<b>2</b>	Alu / Wooden	850~1050
<b>3</b>	Plastic	700
<b>4</b>	Plastic	600
<b>5</b>	Plastic	800
<b>6</b>	Plastic	650
<b>7</b>	Plastic	750
<b>8</b>	Plastic	850
<b>9</b>	Plastic	900
<b>B</b>	Plastic	950
<b>C</b>	Plastic	1000

# TEK08S Ordering Key

TEK08S

Version: 20220517-D

<b>Load and Speed</b>	<a href="#">See page 3</a>			
<b>Stroke &amp; Retracted Length (mm)</b>	1 = Stroke 450, retracted length 680, Standard			
<b>Column Spec</b>	2 = Square tube (Big profile at bottom)			
<b>Foot (mm)</b>	<a href="#">See page 4-5</a>			
<b>Color</b>	1 = Black (RAL 9005) 2 = Grey (RAL 9006)	3 = White (RAL 9016) 4 = Special grey (RAL 9022)	6 = Matte Black (RAL 7021) 7 = Graphite grey (RAL 7024)	
<b>End Pipe (mm)</b> <a href="#">See page 3</a>	1 = Style A1, fixation holes for tabletop, fixed with motor house, E1 & E2: 550			
<b>Hand Crank Set (mm)</b> <a href="#">See page 6</a>	1 = Aluminum handler, crank length 90 (without handler fixation) 2 = Aluminum handler, crank length 140 (with handler fixation) 3 = Wooden handler, crank length 90 (without handler fixation)	4 = Wooden handler, crank length 140 (with handler fixation) 5 = Plastic hand crankset, black, crank length 127 (including plastic handler fixation)		
<b>HEX Shaft for Hand Crank (mm)</b>	1 = With Aluminum / Wooden handler, for tabletop depth in 600-850 2 = With Aluminum / Wooden handler, for tabletop depth in 850-1050 3 = With plastic hand crankset, for tabletop depth in 700	4 = With plastic hand crankset, for tabletop depth in 600 5 = With plastic hand crankset, for tabletop depth in 800 6 = With plastic hand crankset, for tabletop depth in 650	7 = With plastic hand crankset, for tabletop depth in 750 8 = With plastic hand crankset, for tabletop depth in 850 9 = With plastic hand crankset, for tabletop depth in 900	B = With plastic hand crankset, for tabletop depth in 950 C = With plastic hand crankset, for tabletop depth in 1000
	Note: Above recommended tabletop depth is considered with end pipe #1. Check <a href="#">See page 6</a> for more details if choosing another end pipe.			
<b>Desk Frame</b>	1 = Outer pipe 25*40, W: 1160; standard			
<b>Bracket</b>	0 = Without 1 = Direction 1, standard bracket 2 = Direction 2, standard bracket	3 = Direction 3, standard bracket 4 = Direction 4, standard bracket 5 = Direction 1, triangle bracket	6 = Direction 2, triangle bracket 7 = Direction 3, triangle bracket 8 = Direction 4, triangle bracket	
<b>Assembly Manual</b>	0 = Without			
<b>Cover Hood</b>	0 = Without	1 = With		

## Terms of Use

The user is responsible for determining the suitability of TiMOTION products for a specific application. TiMOTION products are subject to change without prior notice.