

# TEK08 series

## Manually Operated Desk Frame

### General Features

- Max. load 120kg\*
- Speed Lead: 3 or 9mm/turn
- Weight of package 29kg\*
- High strength and stability – Steel construction
- Manually operated by a foldable hand crank which has three material options- wood, metal or plastic.

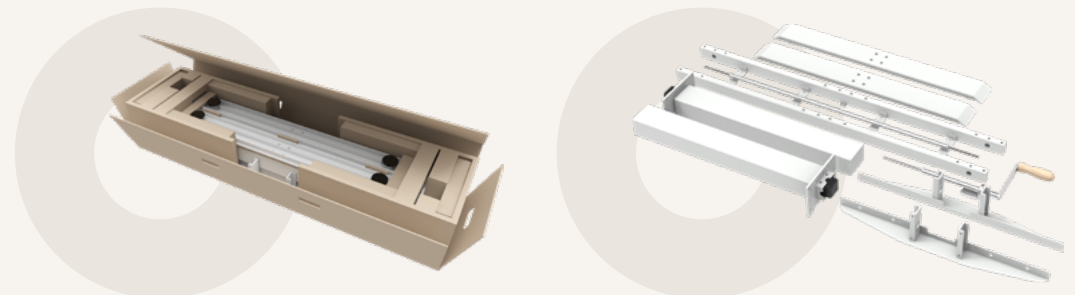
\*It varies upon the selection of components.



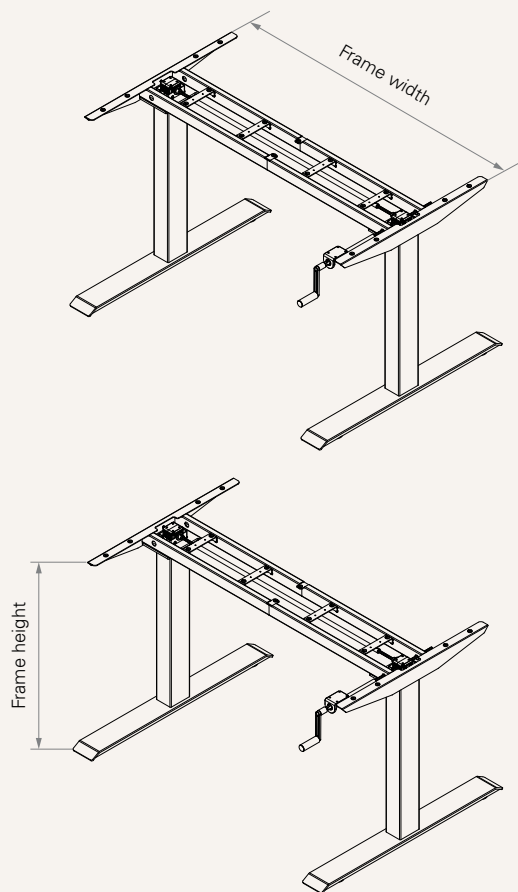
### Color (RAL Classic)

- RAL9005
- RAL9006
- RAL9016
- RAL9022
- RAL7021
- RAL7024

\*For more color options, please consult your sales representative.



**Dimension**



**Frame & Work Surface**

Frame dimensions (mm)	Recommended work surface dimensions (mm)	
Width (mm)	Width (mm)	Depth (mm)
1050~1600	1100~1700	600~1050

Note: It varies upon the selection of hand crank hex shaft.

**Hight Range**

Column type	Frame height (mm)	Stroke (mm)
2-Stage	680~1130	450

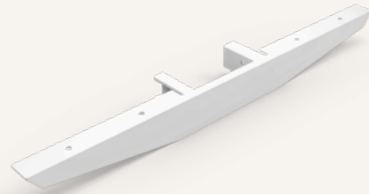
**Load and Speed**

CODE	Push (N)	Self locking force (N)	Lead (mm / turn)	Operating torque (Nm)	
				No load	With load
<b>C</b>	800	800	9	4	7
<b>D</b>	1200	1200	3	2.5	5

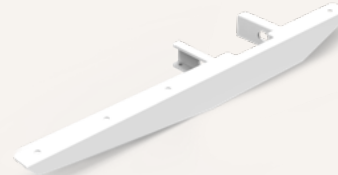
**End Pipe**



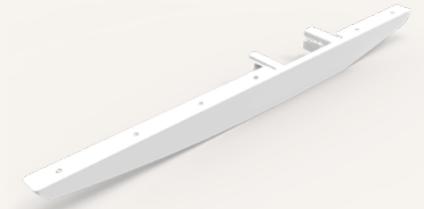
Style A  
(for fixed tabletop)



Style C  
(for C leg, fixed tabletop)



Style C  
(for C leg, fixed tabletop)



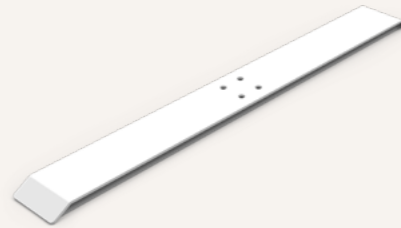
Foot



Style A



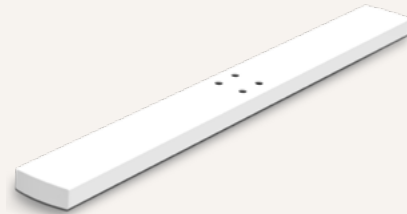
Style B



Style C



Style D



Style E



Style F



Style H



Foot

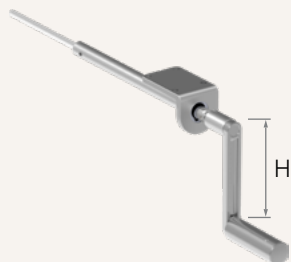


Code	Style	Frame type
0	-	Without
AT1	A	T
AT2	A	T
AT4	A	T
AT6	A	T
AC1	A	C
AC4	A	C
AC5	A	C
BT1	B	T
BT2	B	T
BT6	B	T
BC1	B	C
BC2	B	C
BC5	B	C
CT1	C	T
CT4	C	T
CT6	C	T
DT1	D	T
DT6	D	T
ET1	E	T
FT2	F	T
HT2	H	T

**Hand Crank Set (mm)**



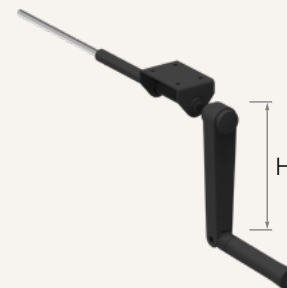
Aluminum handler  
1 = H = 90  
2 = H = 140



Wooden handler  
3 = H = 90  
4 = H = 140



Plastic hand crank  
5 = H = 127



**Compatible Tabletop Depth (mm)**

End pipe (mm)		1	2	3	4
<b>HEX shaft for hand crank</b>		600, T-leg	580, C-leg	650, C-leg	700, C-leg
<b>1</b>	Alu / Wooden	600~850	580~650	650	-
<b>2</b>	Alu / Wooden	850~1050	650~850	650~850	700~850
<b>3</b>	Plastic	700	-	-	-
<b>4</b>	Plastic	600	-	-	-
<b>5</b>	Plastic	800	650	650	-
<b>6</b>	Plastic	650	-	-	-
<b>7</b>	Plastic	750	600	-	-
<b>8</b>	Plastic	850	700	700	700
<b>9</b>	Plastic	900	750	750	750
<b>B</b>	Plastic	950	800	800	800
<b>C</b>	Plastic	1000	850	850	850

<b>Load and Speed</b>	<a href="#">See page 3</a>		
<b>Stroke &amp; Retracted Length (mm)</b>	1 = Stroke 450, retracted length 680, Standard		
<b>Column Spec (mm)</b>	3 = Square tube, 1.5 (Big profile at bottom)		
<b>Foot (mm)</b>	<a href="#">See page 4-5</a>		
<b>Color</b>	1 = Black (RAL 9005) 2 = Grey (RAL 9006)	3 = White (RAL 9016) 4 = Special grey (RAL 9022)	6 = Matte Black (RAL 7021) 7 = Graphite grey (RAL 7024)
<b>End Pipe (mm)</b> <a href="#">See page 3</a>	1 = Style A, fixation holes, E1 & E2: 600, Standard 2 = Style C, fixation holes, E1 & E2: 580, for C-leg Note: Please note the compatible tabletop depth will be different depends on end pipe and the HEX shaft for hand crank.	3 = Style C, fixation holes, E1 & E2: 650, for C-leg 4 = Style C, fixation holes, E1 & E2: 700, for C-leg	
<b>Hand Crank Set (mm)</b> <a href="#">See page 6</a>	1 = Aluminum handler, crank length 90 (without handler fixation) 2 = Aluminum handler, crank length 140 (with handler fixation) 3 = Wooden handler, crank length 90 (without handler fixation)	4 = Wooden handler, crank length 140 (with handler fixation) 5 = Plastic hand crankset, black, crank length 127 (including plastic handler fixation)	
<b>HEX Shaft for Hand Crank (mm)</b>	1 = With Aluminum / Wooden handler, for tabletop depth in 600~850 2 = With Aluminum / Wooden handler, for tabletop depth in 850~1050 3 = With plastic hand crankset, for tabletop depth in 700 4 = With plastic hand crankset, for tabletop depth in 600 5 = With plastic hand crankset, for tabletop depth in 800 6 = With plastic hand crankset, for tabletop depth in 650 Note: Above recommended tabletop depth is considered with end pipe #1. Check <a href="#">See page 6</a> for more details if choosing another end pipe.	7 = With plastic hand crankset, for tabletop depth in 750 8 = With plastic hand crankset, for tabletop depth in 850 9 = With plastic hand crankset, for tabletop depth in 900 B = With plastic hand crankset, for tabletop depth in 950 C = With plastic hand crankset, for tabletop depth in 1000	
<b>Desk Frame</b>	1 = Outer pipe 20*40, W: 1050-1600; standard		
<b>Bracket</b>	0 = Without 1 = Direction 1, standard bracket	3 = Direction 3, standard bracket 5 = Direction 1, triangle bracket	7 = Direction 3, triangle bracket
<b>Assembly Manual</b>	0 = Without C = Chinese, TiMOTION logo, Black / White printing	E = English, TiMOTION logo, Black / White printing 1 = Chinese, TiMOTION logo, colour printing	2 = English, TiMOTION logo, colour printing 3 = Chinese, No logo, Black / White printing 4 = English, No logo, Black / White printing 5 = Chinese, No logo, colour printing 6 = English, No logo, colour printing

### Terms of Use

The user is responsible for determining the suitability of TiMOTION products for a specific application. TiMOTION products are subject to change without prior notice.