

# TA20

series



## Product Segments

- **Ergo Motion**

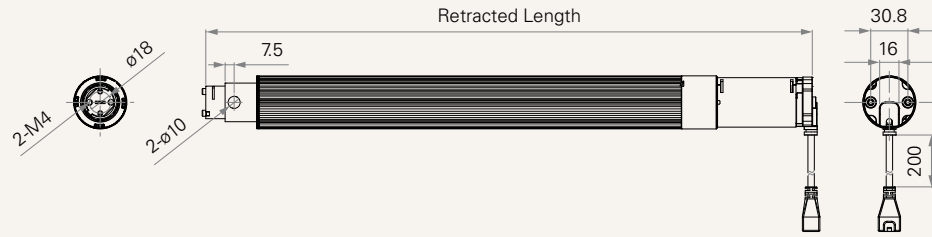
The TA20 is a 3 stage inline actuator which combines long stroke length with minimum installation dimension. This actuator is suitable for various customized lifting columns in height adjustable furniture, particularly with the need for a slim and neat structure.

### General Features

Max. load	700N (push)
Max. speed at max. load	38mm/s
Max. speed at no load	63mm/s
Retracted length	$\geq (\text{Stroke}/2) + 177\text{mm}$
Stroke	50~800mm
Options	Hall sensors
Operational temperature range	+5°C~+45°C
Suitable for 3-stage desk columns	

**Drawing**

Standard Dimensions  
(mm)



**Load and Speed**

CODE	Rated Load (N)	Typical Current (A)		Typical Speed (mm/s)	
		No Load 29V DC	With Load 29V DC	No Load 29V DC	With Load 29V DC
<b>Motor Speed (5200RPM, Duty Cycle 10%)</b>					
<b>B</b>	600	≤ 1.8	≤ 4.8	63	45
<b>C</b>	700	≤ 1.8	≤ 5.0	48	38

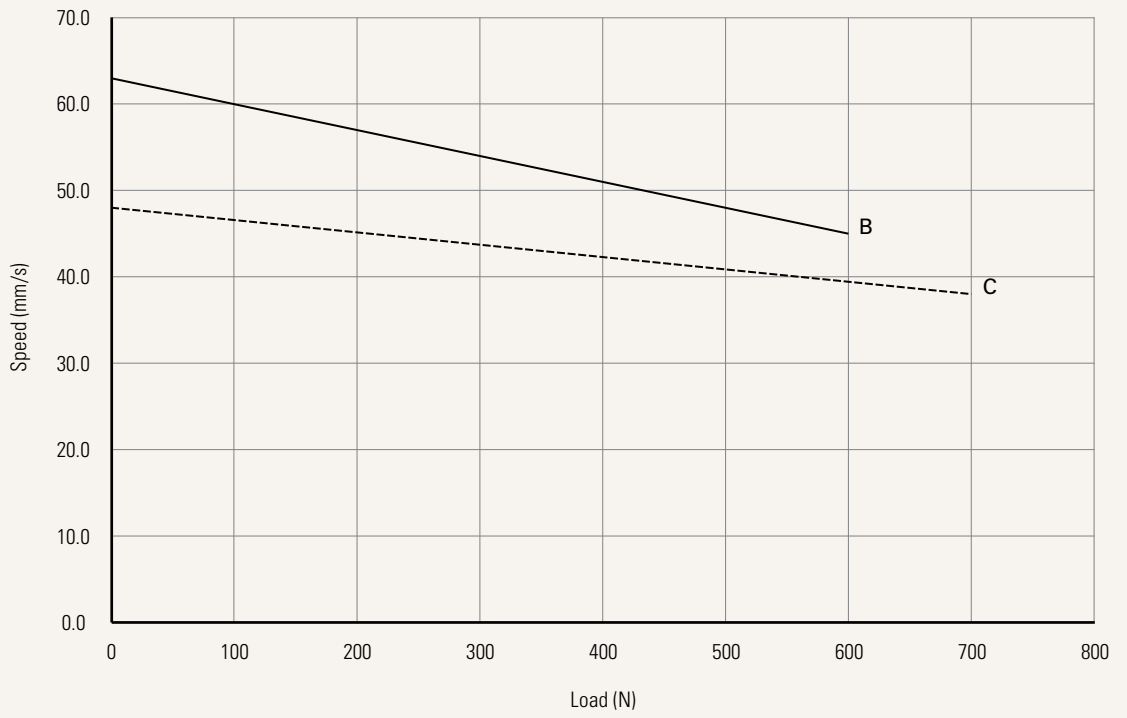
**Note**

- 1 The TA is designed especially for push applications, not suitable for pull applications.
- 2 This self-locking force level is reached only when a short circuit is applied on the terminals of the motor. All the TiMOTION control boxes have this feature built-in.
- 3 Please refer to the approved drawing for the final authentic value.

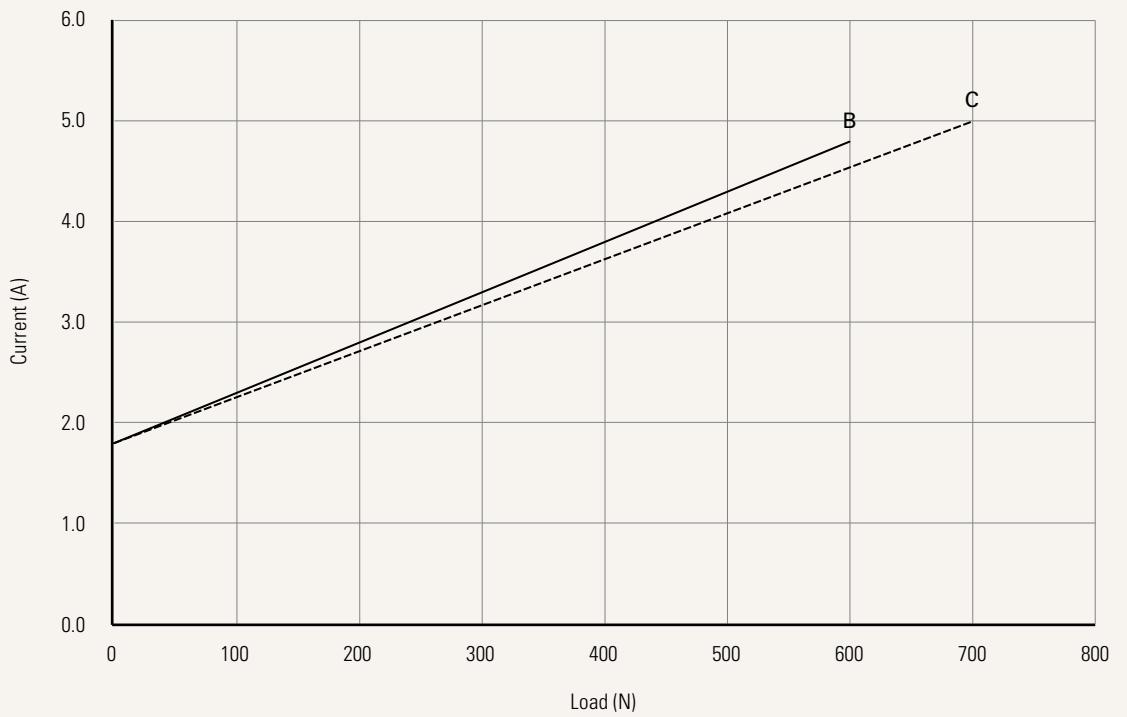
**Performance Data (24V DC Motor)**

Motor Speed (5200RPM, Duty Cycle 10%)

Speed vs. Load



Current vs. Load

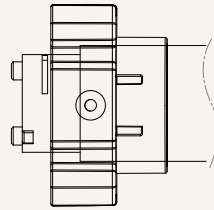
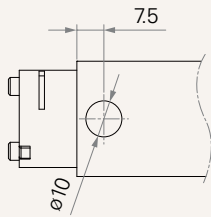


<b>Load and Speed</b>	<a href="#">See page 2</a>		
<b>Stroke (mm)</b>	50-800		
<b>Retracted Length (mm)</b>	Minimum retracted length needs to $\geq (\text{stroke} / 2) + 177$		
<b>Fixation of Mid-Tube (mm)</b>	1 = Hole ( $\varnothing 10.0$ )	2 = Fixation bracket	
	<a href="#">See page 5</a>		
<b>Front Attachment (mm)</b>	2 = Plastic		
	<a href="#">See page 5</a>		
<b>Output Signals</b>	2 = Hall sensor * 2, standard		
<b>Connector</b>	H = Molex 6P, socket		
	<a href="#">See page 5</a>		
<b>Cable Length (mm)</b>	1 = Straight, 200		
	<a href="#">See page 5</a>		
<b>Extension Cable Connector</b>	1 = Molex 6 pin (plug) to Molex 8 pin (plug), 180° plug, standard		
	<a href="#">See page 6</a>		
<b>Extension Cable Length (mm)</b>	1 = Straight, 500	3 = Straight, 1000	4 = Straight, 1500
	<a href="#">See page 6</a>		

## Fixation of Mid-Tube (mm)

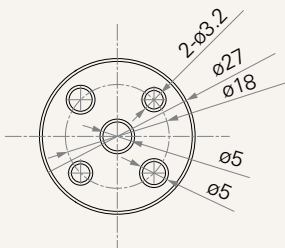
1 = Hole (Ø10.0)

2 = Fixation bracket



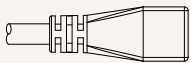
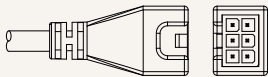
## Front Attachment (mm)

2 = Plastic

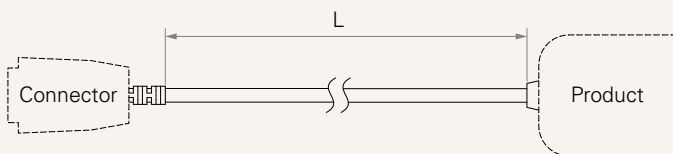


## Connector

H = Molex 6P, socket



## Cable Length



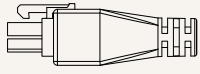
### Cable Section (mm)

CODE	L
1	200

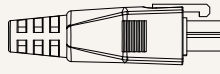
---

## Extension Cable Connector

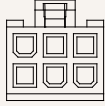
1 = Molex 6 pin (plug) to Molex 8 pin (plug), 180° plug, standard



Molex 6 pin, plug

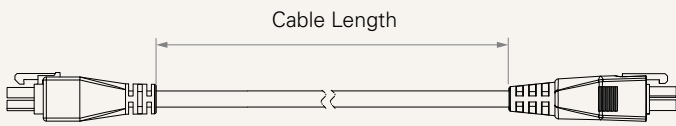


Molex 8 pin, plug



---

## Extension Cable Length



---

## Terms of Use

The user is responsible for determining the suitability of TiMOTION products for a specific application. TiMOTION products are subject to change without prior notice.